

R

CLEAR LANTERN BY ROSE UNIACKE - US WIRING



Code: 8079

RU EDITIONS

Finish: Dark Bronze

The Clear Lanterns are made from traditional mouth blown, clear soda lime silica glass.

Each lantern is unique, each with minor variations in the glass. The Large size is the largest size possible for mouth blown glass

E26 bulb recommended (not included)

8 - 10 weeks lead time



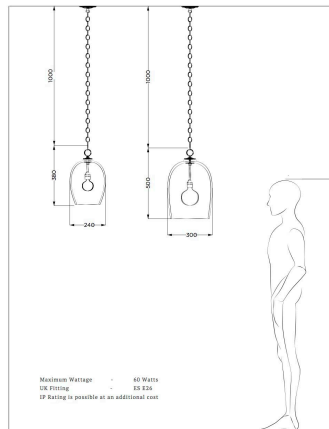
Dimensions:

H 50cm x Dia. 30cm. 6kg

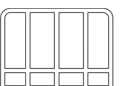
H 19³/₄" x Dia. 12". 13.23lb

ROSE UNIACKE

THE CLEAR & BUBBLE LANTERNS



76 - 84, Pallino Road, London, SW1W 8PL | +44 (0)20 7750 7050 | mail@roseuniacke.com
Copyright © 2015 Rose Uniacke



R

R

Clear Lantern by Rose Uniacke

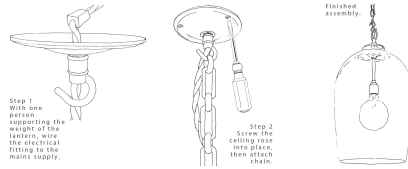
Care Instructions

Please read the instructions fully before installing. It is recommended that this fixture is installed by a qualified electrician.

Do not use any polishes, cleaners, chemicals or abrasives on this product. Wipe clean with a soft, dry, lint free cloth only.

When fitting or replacing bulb check max wattage on lampholder. Max wattage 42W.

Install Instructions



RU 2019

