

R

SMALL CLEAR LANTERN BY ROSE UNIACKE



Code: 2376

RU EDITIONS

Finish: Solid Brass

The Clear Lanterns are made from traditional mouth blown, clear soda lime silica glass. Each lantern is unique, each with minor variations in the glass

E27 bulb recommended (not included)

8 - 10 weeks lead time.

Dimensions:

H 38cm x Dia. 24cm. 5kg



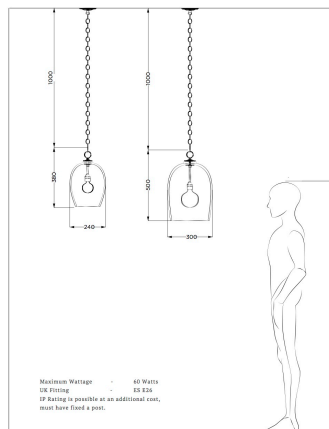
R

H 15" x Dia. 9½". 11lb



ROSE UNIACKE

THE CLEAR & BUBBLE LANTERNS



74 - 84, Palladio Road, London, SW1W 8PL | +44 (0)20 7730 7050 | mail@roseuniacke.com
Copyright © 2013 Rose Uniacke



R

R

Clear Lantern by Rose Uniacke

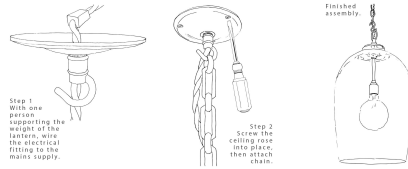
Care Instructions

Please read the instructions fully before installing. It is recommended that this fixture is installed by a qualified electrician.

Do not use any polishes, cleaners, chemicals or abrasives on this product. Wipe clean with a soft, dry, lint free cloth only.

When fitting or replacing bulb check max wattage on lampholder. Max wattage 42W.

Install Instructions



RU 2019

