

R

CURVED DOUBLE ARM WALL LIGHT IN DARK BRONZE - US WIRING



£1,248

Code: 4421

RU EDITIONS

A pair of mouth-blown glass storm shades held in place by two curved arms. The light is made from components of sand-cast and machined brass, then patinated dark bronze. Alternative frosted shades available upon request

Finish : Dark Bronze

US wiring

Bulb required (not included) : E12, 40W max

Lead time 12 weeks

Dimensions:

R

H 39cm x W 29cm x D 30cm

H 15½" x W 11½" x D 12"



Rose Uniacke

76-84 Pimlico Road, London SW1W 8PL T +44 (0)20 7730 7050

mail@roseuniacke.com www.roseuniacke.com

R

CURVED DOUBLE ARM WALL LIGHT IN BRASS - US WIRING



£1,248

Code: 4425

RU EDITIONS

A pair of mouth-blown glass storm shades held in place by two curved arms. The light is made from components of sand-cast and machined brass, the brass left un-lacquered and slightly brushed. Alternative frosted shades available upon request

Finish: Solid Brass

US wiring

Bulb required (not included) : E12, 40W max

Available Immediately

Dimensions:

Rose Uniacke
76-84 Pimlico Road, London SW1W 8PL T +44 (0)20 7730 7050
mail@roseuniacke.com www.roseuniacke.com

R

H 39cm x W 29cm x D 30cm
H 15½" x W 11½" x D 12"



ROSE UNIACKE

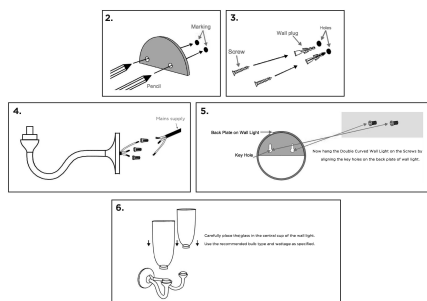
DOUBLE CURVED WALL LIGHT INSTALLATION INSTRUCTIONS (US)

CAUTION:

It is recommended that this fixture is installed by a qualified electrician. Please read the instructions fully before installing.

INSTALLATION INSTRUCTIONS:

1. Unpack all the parts and place them on a clean surface, do not discard the packaging material until the assembly is completed.
2. Mark the hole location on the wall using a pencil with the mounting hole template and a spirit level. Drill holes.
3. Insert plastic wall plug into the drilled holes. Insert the screws and tighten using a screwdriver. Screws should protrude slightly from the wall to allow for the back plate to hang.
4. Connect the wires to the mains supply.
5. Carefully mount the wall light on the screws using the keyholes on the back plate.
6. Once the light is secured to the wall, insert the glass before inserting the bulb. Only use the recommended bulb type and wattage as specified on the lamp holder.



CARE INSTRUCTIONS:

Do not use any polishes, cleaners, chemicals or abrasives on this product. Wipe clean with a soft dry cloth only.

Rose Uniacke

76-84 Pimlico Road, London SW1W 8PL T +44 (0)20 7730 7050
mail@roseuniacke.com www.roseuniacke.com

R

CURVED DOUBLE ARM WALL LIGHT IN DISTRESSED SILVER - US WIRING



£1,248

Code: 4419

RU EDITIONS

A pair of mouth-blown glass storm shades held in place by two curved arms. The light is made from components of sand-cast and machined brass, then silver electro-plated to finish. Alternative frosted shades available upon request

Finish : Distressed Silver
US wiring

Available immediately

Dimensions:

Rose Uniacke
76-84 Pimlico Road, London SW1W 8PL T +44 (0)20 7730 7050
mail@roseuniacke.com www.roseuniacke.com

R

H 39cm x W 29cm x D 30cm

H 15½" x W 11½" x D 12"



Rose Uniacke

76-84 Pimlico Road, London SW1W 8PL T +44 (0)20 7730 7050
mail@roseuniacke.com www.roseuniacke.com

R

CURVED DOUBLE ARM WALL LIGHT IN POLISHED NICKEL - US WIRING



£1,248

Code: 4427

RU EDITIONS

With a pair of mouth-blown glass storm shades, held in place by two curved arms. The light is made from components of sand-cast and machined brass, which are then Nickel electro-plated to finish. Alternative frosted shades available upon request

Finish : Nickel / Clear glass shade
US wiring
Bulb required (not included) : E12, 40W max

Available immediately

Dimensions:

Rose Uniacke
76-84 Pimlico Road, London SW1W 8PL T +44 (0)20 7730 7050
mail@roseuniacke.com www.roseuniacke.com

R

H 39cm x W 29cm x D 30cm

H 15½" x W 11½" x D 12"



Rose Uniacke

76-84 Pimlico Road, London SW1W 8PL T +44 (0)20 7730 7050

mail@roseuniacke.com www.roseuniacke.com



ROSE UNIACKE

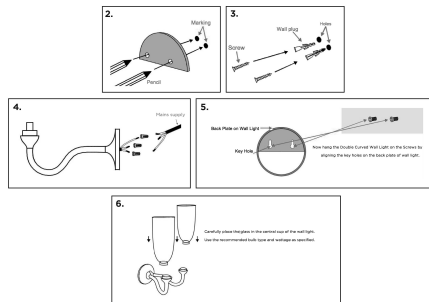
DOUBLE CURVED WALL LIGHT INSTALLATION INSTRUCTIONS (US)

CAUTION:

It is recommended that this fixture is installed by a qualified electrician. Please read the instructions fully before installing.

INSTALLATION INSTRUCTIONS:

1. Unpack all the parts and place them on a clean surface, do not discard the packaging material until the assembly is completed.
2. Mark the hole location on the wall using a pencil with the mounting hole template and a spirit level. Drill holes.
3. Insert plastic wall plug into the drilled holes. Insert the screws and tighten using a screwdriver. Screws should protrude slightly from the wall to allow for the back plate to hang.
4. Connect the wires to the mains supply.
5. Carefully mount the wall light on the screws using the keyholes on the back plate.
6. Once the light is secured to the wall, insert the glass before inserting the bulb. Only use the recommended bulb type and wattage as specified on the lamp holder.



CARE INSTRUCTIONS:

Do not use any polishes, cleaners, chemicals or abrasives on this product. Wipe clean with a soft dry cloth only.

Rose Uniacke

76-84 Pimlico Road, London SW1W 8PL T +44 (0)20 7730 7050

mail@roseuniacke.com www.roseuniacke.com



ROSE UNIACKE

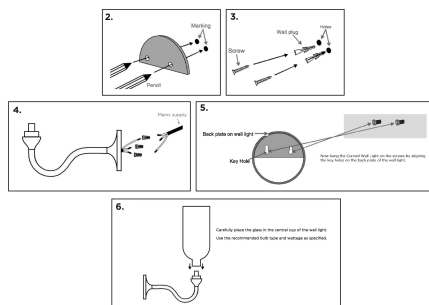
CURVED WALL LIGHT INSTALLATION INSTRUCTIONS (US)

CAUTION:

It is recommended that this fixture is installed by a qualified electrician. Please read the instructions fully before installing.

INSTALLATION INSTRUCTIONS:

1. Unpack all the parts and place them on a clean surface, do not discard the packaging material until the assembly is completed.
2. Mark the hole location on the wall using a pencil with the mounting hole template and a spirit level. Drill holes.
3. Insert plastic wall plug into the drilled holes. Insert the screws and tighten using a screwdriver. Screws should protrude slightly from the wall to allow for the back plate to hang.
4. Connect the wires to the mains supply.
5. Carefully mount the wall light on the screws using the keyholes on the back plate.
6. Once the light is secured to the wall, insert the glass before inserting the bulb. Only use the recommended bulb type and wattage as specified on the lamp holder.



CARE INSTRUCTIONS:

Do not use any polishes, cleaners, chemicals or abrasives on this product. Wipe clean with a soft dry cloth only.

Rose Uniacke

76-84 Pimlico Road, London SW1W 8PL T +44 (0)20 7730 7050

mail@roseuniacke.com www.roseuniacke.com