

# R

## SMALL LEADED GLASS LANTERN BY ROSE UNIACKE - US WIRING



Code: 8100

### RU EDITIONS

Made in Birmingham, the home of British stained glass and metal work. The lead construction is a design based on the traditional constructions of Victorian terrariums.

The multi-faceted shade hangs from three simple dark bronze chains supported by a ceiling rose. Central to all of this is a single dark bronze egg shaped lamp holder. The glass shade comprises 4 types of traditional cut glass, which is why they appear slightly different and cast curious light washes.

E26 bulb recommended (not included)

One metre chain standard length

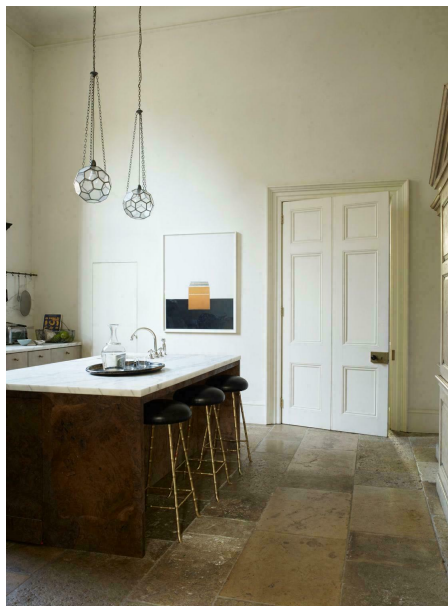
# R

Lead time 8 - 10 weeks

Dimensions:

H 25cm x W 30cm. 2.5kg

H 10" x W 12". 5.51lb



Rose Uniacke

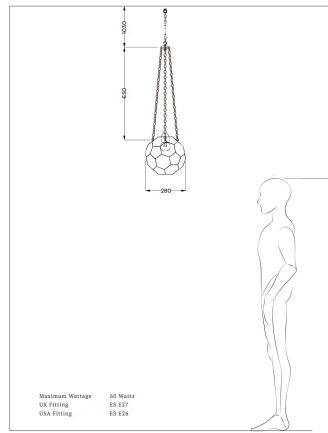
76-84 Pimlico Road, London SW1W 8PL T +44 (0)20 7730 7050  
mail@roseuniacke.com www.roseuniacke.com

# R



ROSE UNIACKE

THE LEADED LANTERN



76 - 84, Pimlico Road, London, SW1W 8PL | +44 (0)20 7730 7050 | mail@roseuniacke.com  
Copyright © 2015 Rose Uniacke



# R

## MEDIUM LEADED LANTERN BY ROSE UNIACKE - US WIRING



£4,980

Code: 8104

### RU EDITIONS

Made in Birmingham, the home of British stained glass and metal work. The lead construction is a design based on the traditional constructions of Victorian terrariums.

The multi-faceted shade hangs from three simple dark bronze chains supported by a ceiling rose. Central to all of this is a single dark bronze egg shaped lamp holder. The glass shade comprises 4 types of traditional cut glass, which is why they appear slightly different and cast curious light washes

E26 bulb recommended (not included)

Lead time 8 - 10 weeks

# R

Dimensions:

H 40cm x W 45cm

H 16" x W 17¾"



Rose Uniacke

76-84 Pimlico Road, London SW1W 8PL T +44 (0)20 7730 7050  
mail@roseuniacke.com www.roseuniacke.com

# R

---



# R

## LARGE LEADED LANTERN BY ROSE UNIACKE - US WIRING



Code: 8105

### RU EDITIONS

Made in Birmingham, the home of British stained glass and metal work. The lead construction is a design based on the traditional constructions of Victorian terrariums.

The multi-faceted shade hangs from three simple dark bronze chains supported by a ceiling rose. Central to all of this is a single dark bronze egg shaped lamp holder. The glass shade comprises 4 types of traditional cut glass, which is why they appear slightly different and cast curious light washes.

E26 bulb recommended (not included)

Lead time 8-10 weeks

Dimensions:

# R

H 45cm x W 50cm

H 17¾" x W 19¾"



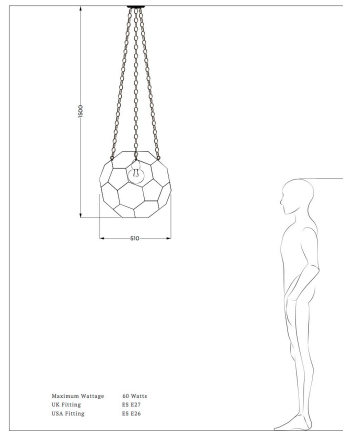
Rose Uniacke

76-84 Pimlico Road, London SW1W 8PL T +44 (0)20 7730 7050

mail@roseuniacke.com www.roseuniacke.com

## ROSE UNIACKE

### THE LARGE LEADED LANTERN



76 - 84, Pimlico Road, London, SW1W 8PL | +44 (0)20 7730 7050 | mail@roseuniacke.com  
Copyright © 2015 Rose Uniacke



Rose Uniacke

76-84 Pimlico Road, London SW1W 8PL T +44 (0)20 7730 7050  
mail@roseuniacke.com www.roseuniacke.com