

# R

## CURVED WALL LIGHT IN DARK BRONZE - US WIRING



£1,140

Code: 4297

RU EDITIONS

Mouth-blown glass storm shade, held in place by a curved arm. The light is made from components of sand-cast and machined brass, which are then patinated dark bronze.

Alternative frosted shade available upon request

Metal Finish: Dark Bronze

US wiring

Bulb required (not included) : E12, 40W max

Available immediately

Backplate diameter: 8.5cm / 3.4"

Rose Uniacke

76-84 Pimlico Road, London SW1W 8PL T +44 (0)20 7730 7050

mail@roseuniacke.com www.roseuniacke.com

# R

## Dimensions:

H 38cm x W 11.5cm x D 30cm

H 15" x W 4 $\frac{3}{4}$ " x D 12"

## ROSE UNIACKE

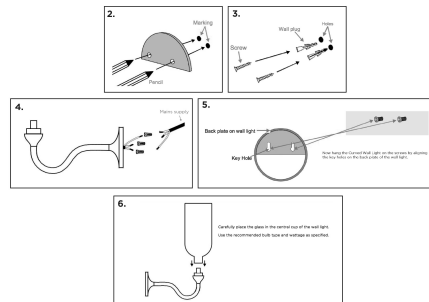
### CURVED WALL LIGHT INSTALLATION INSTRUCTIONS (US)

#### CAUTION:

It is recommended that this fixture is installed by a qualified electrician. Please read the instructions fully before installing.

#### INSTALLATION INSTRUCTIONS:

1. Unpack all the parts and place them on a clean surface, do not discard the packaging material until the assembly is completed.
2. Mark the hole location on the wall using a pencil with the mounting hole template and a spirit level. Drill holes.
3. Insert plastic wall plug into the drilled holes. Insert the screws and tighten using a screwdriver. Screws should protrude slightly from the wall to allow for the back plate to hang.
4. Connect the wires to the mains supply.
5. Carefully mount the wall light on the screws using the keyholes on the back plate.
6. Once the light is secured to the wall, insert the glass before inserting the bulb. Only use the recommended bulb type and wattage as specified on the lamp holder.



#### CARE INSTRUCTIONS:

Do not use any polishes, cleaners, chemicals or abrasives on this product. Wipe clean with a soft dry cloth only.

Rose Uniacke

76-84 Pimlico Road, London SW1W 8PL T +44 (0)20 7730 7050

mail@roseuniacke.com www.roseuniacke.com

# R

## CURVED WALL LIGHT IN DISTRESSED SILVER - US WIRING



£1,140

Code: 4295

RU EDITIONS

Mouth-blown glass storm shade, held in place by a curved arm. The light is made from components of sand-cast and machined brass, then silver electro-plated to finish.

Alternative frosted shade available upon request

Metal Finish: Distressed Silver

US Wiring

Bulb required (not included) : E12, 40W max

Lead-time 4-6 weeks

Backplate diameter: 8.5cm / 3.4"

# R

## Dimensions:

H 38cm x W 11.5cm x D 30cm

H 15" x W 4 $\frac{3}{4}$ " x D 12"



## ROSE UNIACKE

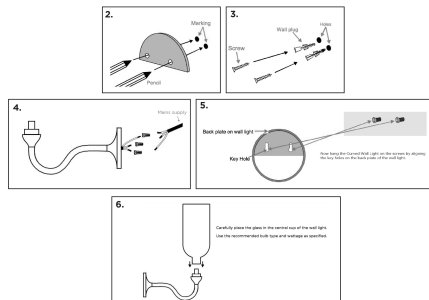
### CURVED WALL LIGHT INSTALLATION INSTRUCTIONS (US)

#### CAUTION:

It is recommended that this fixture is installed by a qualified electrician. Please read the instructions fully before installing.

#### INSTALLATION INSTRUCTIONS:

1. Unpack all the parts and place them on a clean surface, do not discard the packaging material until the assembly is completed.
2. Mark the hole location on the wall using a pencil with the mounting hole template and a spirit level. Drill holes.
3. Insert plastic wall plug into the drilled holes. Insert the screws and tighten using a screwdriver. Screws should protrude slightly from the wall to allow for the back plate to hang.
4. Connect the wires to the mains supply.
5. Carefully mount the wall light on the screws using the keyholes on the back plate.
6. Once the light is secured to the wall, insert the glass before inserting the bulb. Only use the recommended bulb type and wattage as specified on the lamp holder.



#### CARE INSTRUCTIONS:

Do not use any polishes, cleaners, chemicals or abrasives on this product. Wipe clean with a soft dry cloth only.

Rose Uniacke

76-84 Pimlico Road, London SW1W 8PL T +44 (0)20 7730 7050

mail@roseuniacke.com www.roseuniacke.com

# R

## CURVED WALL LIGHT IN POLISHED NICKEL - US WIRING



£1,140

Code: 4299

RU EDITIONS

Mouth-blown glass storm shade, held in place by a curved arm. The light is made from components of sand-cast and machined brass, which are then Nickel electro-plated.  
Alternative frosted shade available upon request

Metal Finish: Polished Nickel

US wiring

Bulb required (not included) : E12, 40W max

Lead-time 4-6 weeks

Backplate diameter: 8.5cm / 3.4"

Dimensions:

# R

H 38cm x W 11.5cm x D 30cm  
H 15" x W 4<sup>3</sup>/<sub>4</sub>" x D 12"

## ROSE UNIACKE

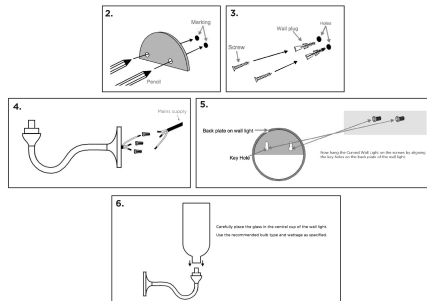
### CURVED WALL LIGHT INSTALLATION INSTRUCTIONS (US)

#### CAUTION:

It is recommended that this fixture is installed by a qualified electrician. Please read the instructions fully before installing.

#### INSTALLATION INSTRUCTIONS:

1. Unpack all the parts and place them on a clean surface, do not discard the packaging material until the assembly is completed.
2. Mark the hole location on the wall using a pencil with the mounting hole template and a spirit level. Drill holes.
3. Insert plastic wall plug into the drilled holes. Insert the screws and tighten using a screwdriver. Screws should protrude slightly from the wall to allow for the back plate to hang.
4. Connect the wires to the mains supply.
5. Carefully mount the wall light on the screws using the keyholes on the back plate.
6. Once the light is secured to the wall, insert the glass before inserting the bulb. Only use the recommended bulb type and wattage as specified on the lamp holder.



#### CARE INSTRUCTIONS:

Do not use any polishes, cleaners, chemicals or abrasives on this product. Wipe clean with a soft dry cloth only.

Rose Uniacke

76-84 Pimlico Road, London SW1W 8PL T +44 (0)20 7730 7050  
mail@roseuniacke.com www.roseuniacke.com

# R

## CURVED WALL LIGHT IN BRASS - US WIRING



£1,140

Code: 4293

RU EDITIONS

Mouth-blown glass storm shade, held in place by a curved arm. The light is made from components of sand-cast and machined brass, the brass left un-lacquered and slightly brushed. Alternative frosted shade available upon request

Metal Finish: Brass

US Wiring

Bulb required (not included) : E12, 40W max

Available immediately

Backplate diameter: 8.5cm / 3.4"

# R

## Dimensions:

H 38cm x W 11.5cm x D 30cm  
H 15" x W 4<sup>3</sup>/<sub>4</sub>" x D 12"

## ROSE UNIACKE

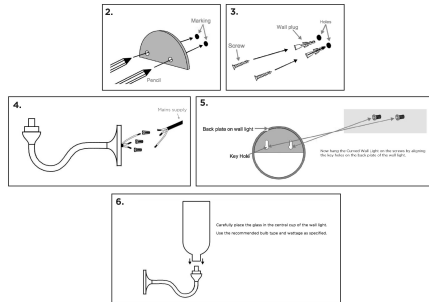
### CURVED WALL LIGHT INSTALLATION INSTRUCTIONS (US)

#### CAUTION:

It is recommended that this fixture is installed by a qualified electrician. Please read the instructions fully before installing.

#### INSTALLATION INSTRUCTIONS:

1. Unpack all the parts and place them on a clean surface, do not discard the packaging material until the assembly is completed.
2. Mark the hole location on the wall using a pencil with the mounting hole template and a spirit level. Drill holes.
3. Insert plastic wall plug into the drilled holes. Insert the screws and tighten using a screwdriver. Screws should protrude slightly from the wall to allow for the back plate to hang.
4. Connect the wires to the mains supply.
5. Carefully mount the wall light on the screws using the keyholes on the back plate.
6. Once the light is secured to the wall, insert the glass before inserting the bulb. Only use the recommended bulb type and wattage as specified on the lamp holder.



#### CARE INSTRUCTIONS:

Do not use any polishes, cleaners, chemicals or abrasives on this product. Wipe clean with a soft dry cloth only.

Rose Uniacke

76-84 Pimlico Road, London SW1W 8PL T +44 (0)20 7730 7050  
mail@roseuniacke.com www.roseuniacke.com