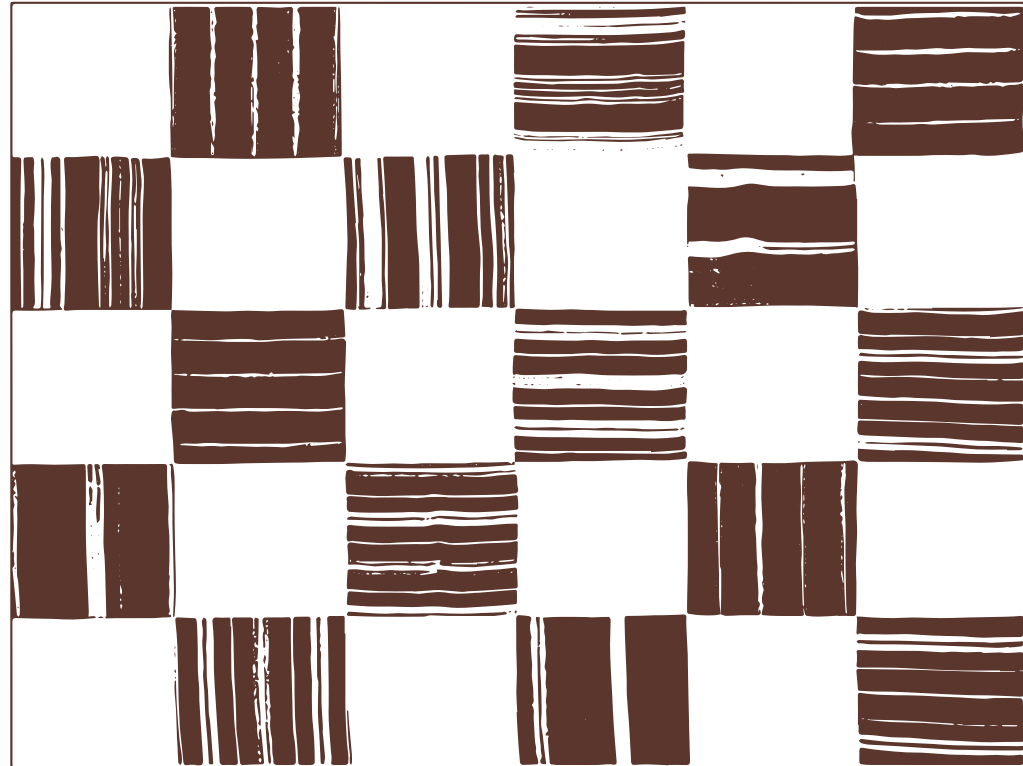


SISTER

THE PATCHWORK  
KILIM RUG



# THE PATCHWORK KILIM RUG



## MATERIALS

Recycled Traditional Turkish Kilims.

## DIMENSIONS

Small 120cm x 180cm  
Medium 200cm x 300cm  
Large 300cm x 400cm

Bespoke sizing available.

## ADDITIONAL COMMENTS

