

# R

## SPOT LIGHT IN RED - US WIRING



Code: 6281

RU EDITIONS

A directional wall light in red. Hand spun brass, and left un-lacquered, allowing the colour to age over time. The US version does not have a switch. Sold individually

US wiring : suitable for United States  
Bulb required (not included) : E12, 25W max

Available Immediately

No screws supplied

The backplate diameter is 8cm / 3.25"

# R

## Dimensions:

H 20.5cm x D 10cm x Dia. 8cm

H 8" x D 3¾" x Dia. 3¼"

# R

Spot Light by Rose Uniacke

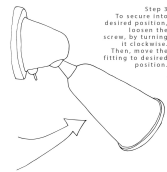
### Care Instructions

Please read the instructions fully before installing. It is recommended that this fixture is installed by a qualified electrician.

Do not use any polishes, cleaners, chemicals or abrasives on this product. Wipe clean with a soft, dry, lint free cloth only.

When fitting or replacing bulb check max wattage on lampholder. Max wattage 42W.

### Install Instructions



RU 2019

Rose Uniacke

76-84 Pimlico Road, London SW1W 8PL T +44 (0)20 7730 7050

mail@roseuniacke.com www.roseuniacke.com