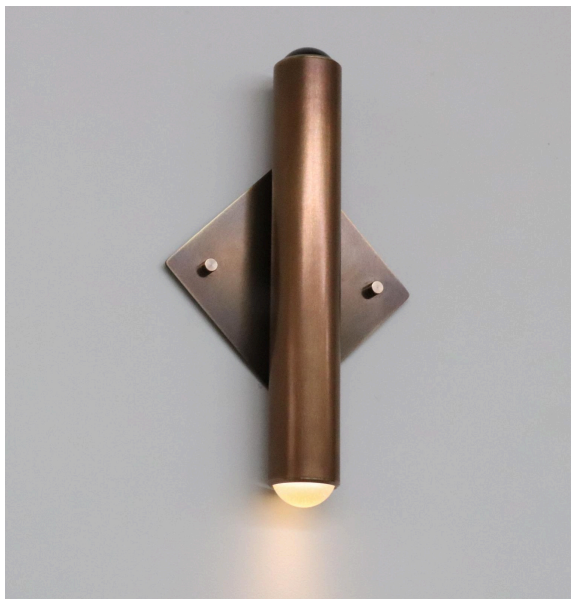


SPECIFICATION SHEET

V3.0



SURVEILLANCE SCONCE

DESCRIPTION

Borrowing its silhouette from a modern day security camera, this dynamic spotlight is designed to cast a beam upon your most valued of treasures.

MATERIALS

Brass, glass, aluminium, LED.

DIMENSIONS

Width: 255mm (10.0")
Depth: 70mm (2.8")
Height: 430mm (16.9")

WEIGHT

2kg (4.4lbs)

LAMPING

LED chip

LED COLOUR TEMP

Warm White 2700k

TYP. VOLTAGE/WATTAGE

@250mA - 31.5V DC @ 8W

LUMENS/CRI

1050lm @ 90+ CRI*
*From the source

DRIVER

Aus: 250mA AC-Dimmable
USA: 250mA 0-10v Dimmable

BEAM ANGLE

34° (approx.)

STANDARD FINISHES

Blonde Brass, Aged Brass, Dark Bronze (these finishes are waxed)

CUSTOM SURFACE FINISHES

Brushed Nickel, Chrome plating (Add 20%)

Clear enamel & powder coated finishes available on request (Add 10%)

METAL SURFACE MAINTENANCE

All LOST PROFILE metal surfaces are waxed. These metal surfaces are designed to age and patinate. Wear gloves when handling to avoid hand prints. Clear enamel coating is available on request. Enamelling does not stop the patination process, it just slows the process down.

DRIVERS & DIMMING

Aus: SURVEILLANCE is supplied with a separate phase-dimmable LED driver. Location of the driver will need to be considered. LOST PROFILE do not supply dimmer switches or wall plates.

USA: SURVEILLANCE is supplied with a separate 0-10 dimmable LED driver. Location of the driver will need to be considered. LOST PROFILE do not supply dimmer switches or wall plates.

PRICING & LEAD TIMES

Please contact us or your nearest LOST PROFILE representative for current pricing and lead times.

